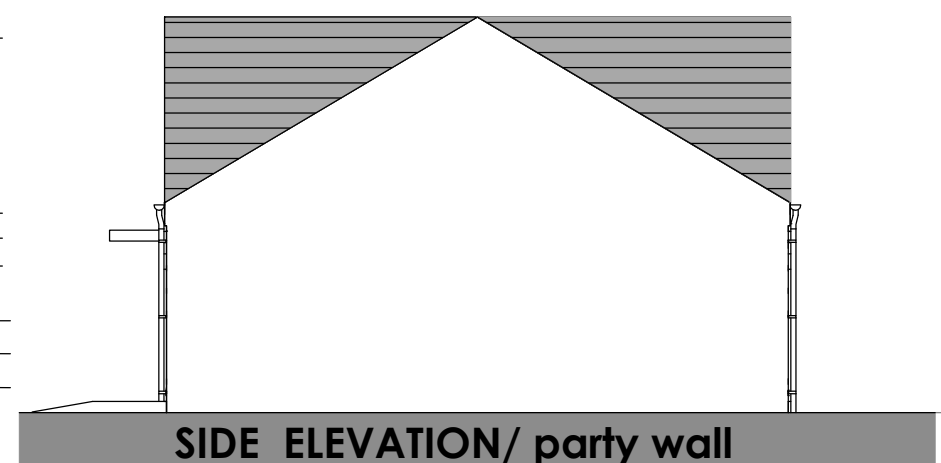


# HOUSE TYPE A



## EXTERNAL MATERIALS

- 1 **ROOF TILES** - CONCRETE INTERLOCKING TILES IN GREY OR RED COLOUR
- 2 **SOFFIT & FASCIAS** - BLACK
- 3 **CORBELLED EAVES**
- 4 **FACING BRICKWORK**- refer to materials plan
- 5 **RENDER OR TIMBER CLADDING**
- 6 **CANOPY**- GRP WITH GREY FASCIA
- 7 **WINDOW HEADERS** - red facing brick
- 8 **WINDOWS** - White UPVC
- 9 **WINDOW CILLS** - Recon Stone cills
- 10 **FRONT DOORS**- refer to materials plan
- 11 **RAINWATER GOODS**- black upvc
- 12 **ELECTRIC METER** - White



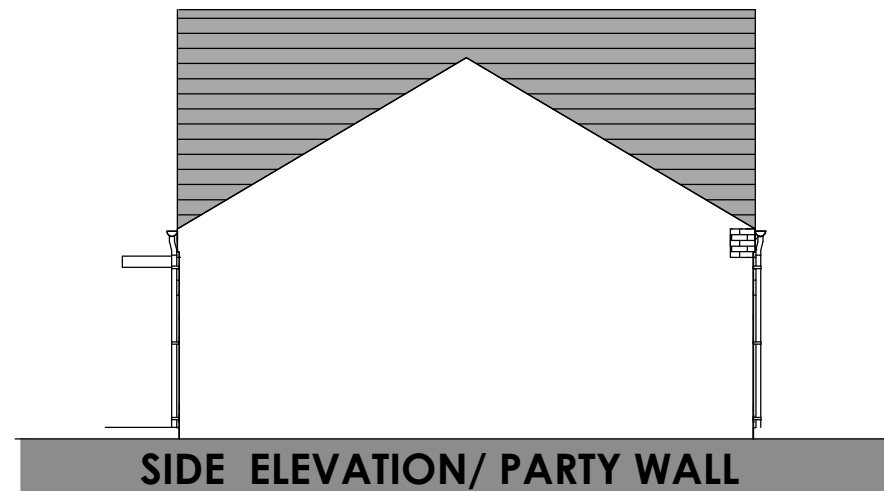
rev	date	revision	by	by

# HOUSE TYPE B



## EXTERNAL MATERIALS

- 1 ROOF TILES - CONCRETE INTERLOCKING TILES IN GREY OR RED COLOUR
- 2 SOFFIT & FASCIAS - BLACK
- 3 CORBELLED EAVES
- 4 FACING BRICKWORK- refer to materials plan
- 5 RENDER OR TIMBER CLADDING
- 6 CANOPY- GRP WITH GREY FASCIA
- 7 WINDOW HEADERS - red facing brick
- 8 WINDOWS - White UPVC
- 9 WINDOW CILLS - Recon Stone cills
- 10 FRONT DOORS- refer to materials plan
- 11 RAINWATER GOODS- black upvc
- 12 ELECTRIC METER - White

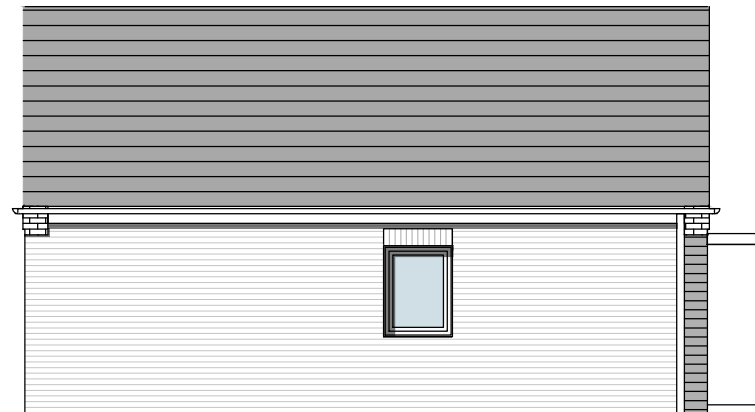


rev	date	revision	by	by

# HOUSE TYPE C



REAR ELEVATION



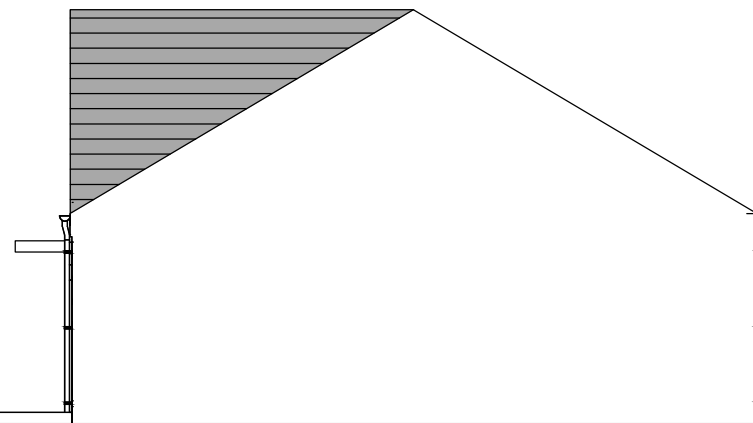
SIDE ELEVATION

## EXTERNAL MATERIALS

- 1 **ROOF TILES** - CONCRETE INTERLOCKING TILES IN GREY OR RED COLOUR
- 2 **SOFFIT & FASCIAS** - BLACK
- 3 **CORBELLED EAVES**
- 4 **FACING BRICKWORK**- refer to materials plan
- 5 **RENDER OR TIMBER CLADDING**
- 6 **CANOPY**- GRP WITH GREY FASCIA
- 7 **WINDOW HEADERS** - red facing brick
- 8 **WINDOWS** - White UPVC
- 9 **WINDOW CILLS** - Recon Stone cills
- 10 **FRONT DOORS**- refer to materials plan
- 11 **RAINWATER GOODS**- black upvc
- 12 **ELECTRIC METER** - White



FRONT ELEVATION



SIDE ELEVATION/ PARTY WALL

rev	date	revision	by	by

# MANAGERS OFFICE



- EXTERNAL MATERIALS**
- 1 **ROOF TILES** - CONCRETE INTERLOCKING TILES IN GREY OR RED COLOUR
  - 2 **SOFFIT & FASCIAS** - BLACK
  - 3 **CORBELLED EAVES**
  - 4 **FACING BRICKWORK**- refer to materials plan
  - 5 **RENDER OR TIMBER CLADDING**
  - 6 **CANOPY**- GRP WITH GREY FASCIA
  - 7 **WINDOW HEADERS** - red facing brick
  - 8 **WINDOWS** - White UPVC
  - 9 **WINDOW CILLS** - Recon Stone cills
  - 10 **FRONT DOORS**- refer to materials plan
  - 11 **RAINWATER GOODS**- black upvc
  - 12 **ELECTRIC METER** - White



rev	date	revision	by	by