

General Notes:

This drawing is the property of Fletcher-Rae (UK) Limited and copyright is reserved by them. The drawing is not to be copied, reproduced or re-distributed either in whole or in part without the prior written consent of Fletcher-Rae (UK) Limited.

The originator shall have no responsibility for any liability, loss, cost, damage or expense arising from or relating to any use of this document other than for its intended purpose on this project.

This drawing shall be read in conjunction with all other relevant drawings, specifications and associated documentation. Any discrepancies, errors or omissions are to be reported to the originator before proceeding with work.

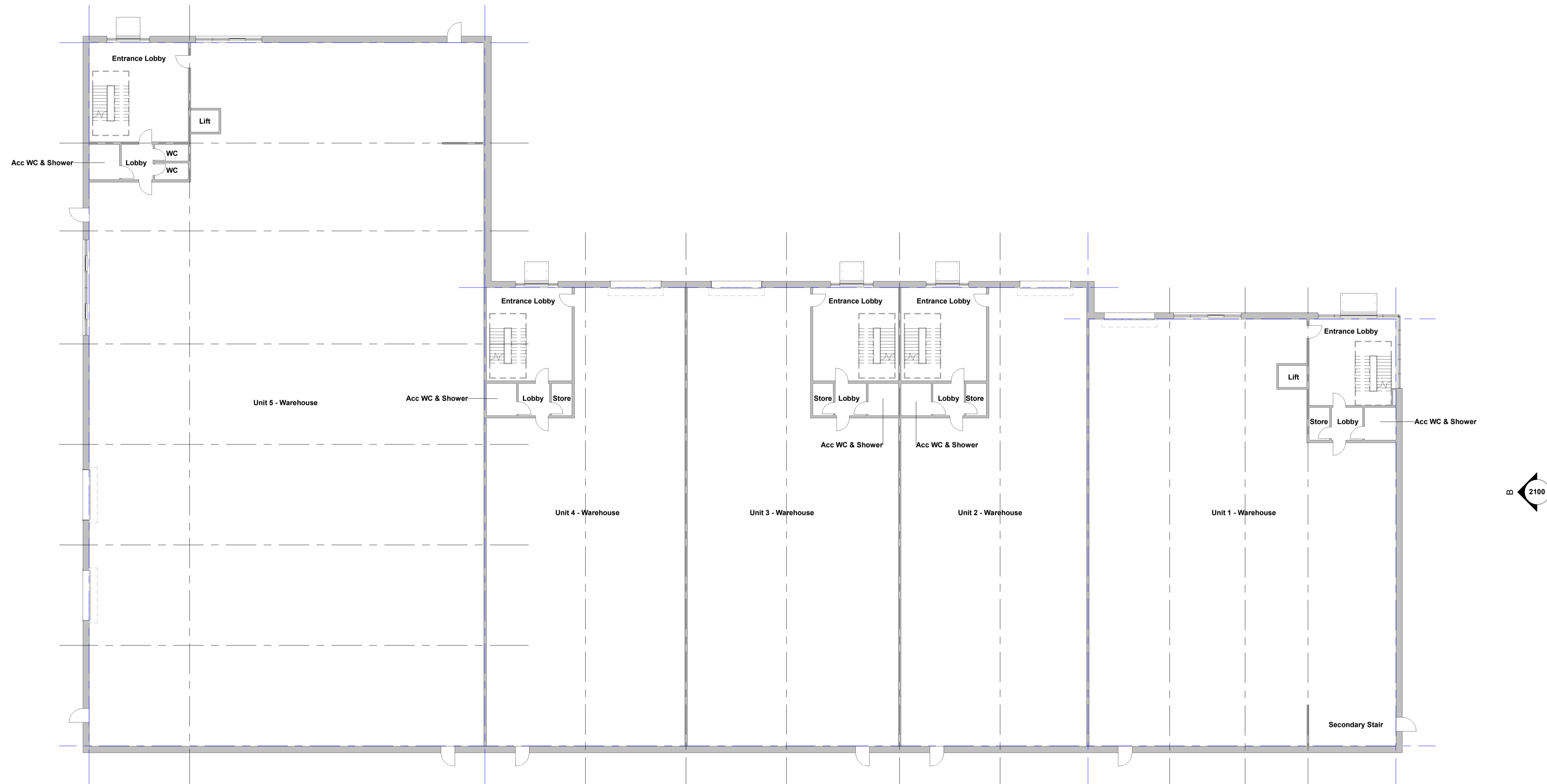
All dimensions are to be checked on site by the contractor prior to proceeding with any work. This drawing shall not be scaled to ascertain any dimensions. Work to figured dimensions only.

DISCLAIMER
When this drawing is issued in CAD, it is an uncontrolled version issued for information only. To enable the recipient to prepare their own documents/drawings for which they are solely responsible.

SOFTWARE INTEROPERABILITY
Fletcher-Rae (UK) Limited prepared this drawing using Autodesk REVIT.

Fletcher-Rae (UK) Limited does not accept liability for any loss or degradation of any information held in the drawing resulting from the transition from the original file format to any other file format or from the recipient's reading of it in any other programme.

Hazard Identification		
Ref	Hazard	Date



WORK IN PROGRESS

P2	Updated following comments from client	SH	19.11.24	BB
P1	WIP Issue	SH	12.11.24	BB
Rev	Revision Details	Drawn	Date	Chkd

Project No: **24025**
 Subtitle: **SO WORK IN PROGRESS**
 Status: **WORK IN PROGRESS**

Client: **Salford UK ELP Limited**

Project: **Stadium Way Salford**

Sheet Name: **Block A - Proposed GA Floor Plan - Level 00**

Drawing No: **24025-HFR-VA-00-DR-A-2000** P2
 Drawn By: **SH** Scale: **1:200 @ A1**
 Created: **NOVEMBER 2024**

HORIZON
 fletcher | rae

Level 12, Tower 12, 18-22 Bridge Street, Manchester, M3 3BZ
 t +44 (0) 161 242 1140
 w www.fletcher-rae.com
 e info@fletcher-rae.com

General Notes:

This drawing is the property of Fletcher-Rae (UK) Limited and copyright is reserved by them. The drawing is not to be copied, reproduced or re-distributed either in whole or in part without the prior written consent of Fletcher-Rae (UK) Limited.

The originator shall have no responsibility for any liability, loss, cost, damage or expense arising from or relating to any use of this document other than for its intended purpose on this project.

This drawing shall be read in conjunction with all other relevant drawings, specifications and associated documentation. Any discrepancies, errors or omissions are to be reported to the originator before proceeding with work.

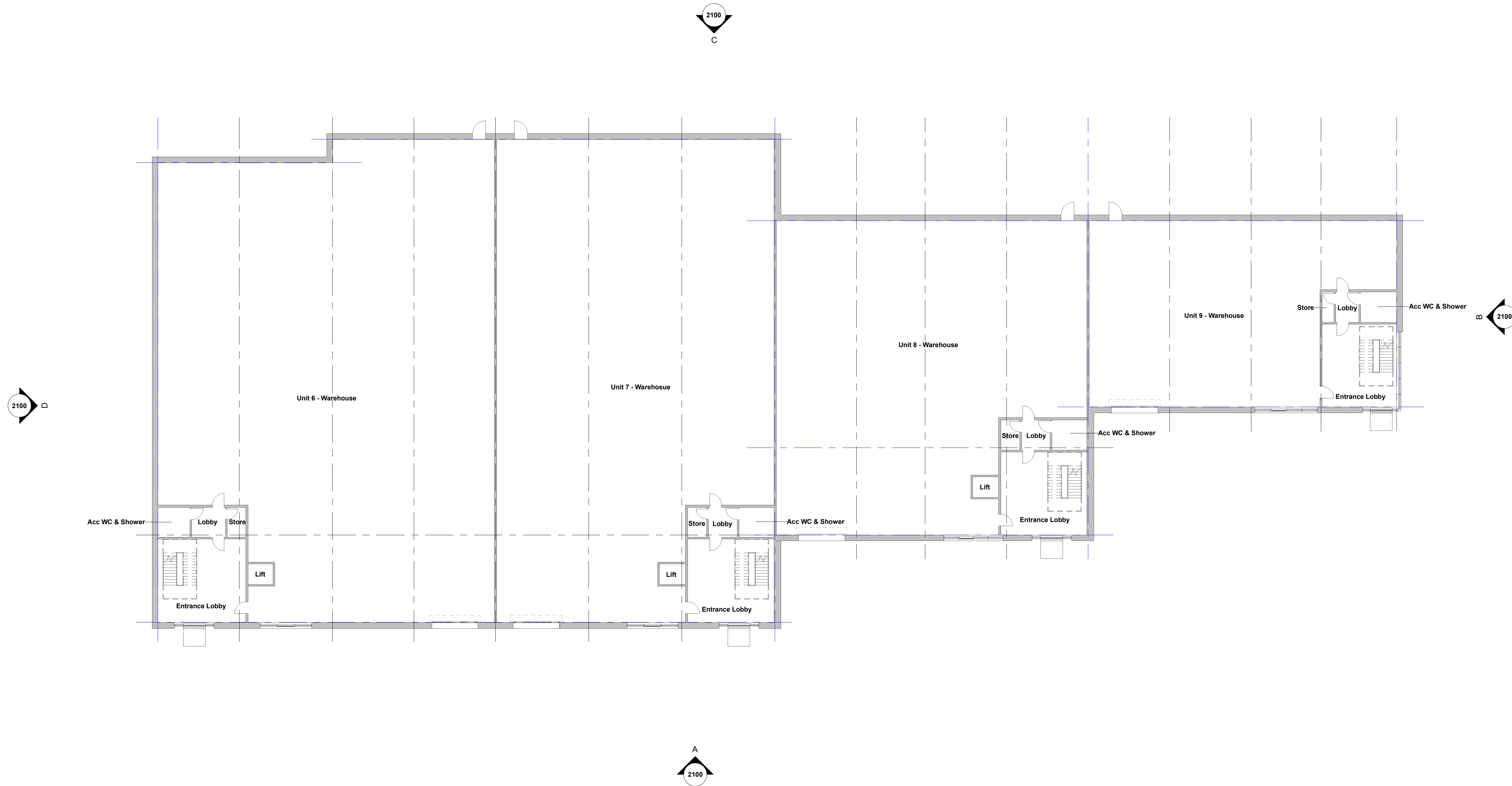
All dimensions are to be checked on site by the contractor prior to proceeding with any work. This drawing shall not be scaled to ascertain any dimensions. Work to figured dimensions only.

DISCLAIMER
When this drawing is issued in CAD, it is an uncontrolled version issued for information only. To enable the recipient to prepare their own documents/drawings for which they are solely responsible.

SOFTWARE INTEROPERABILITY
Fletcher-Rae (UK) Limited prepared this drawing using Autodesk REVIT.

Fletcher-Rae (UK) Limited does not accept liability for any loss or degradation of any information held in the drawing resulting from the transition from the original file format to any other file format or from the recipient's reading of it in any other programme.

Hazard Identification		
Ref	Hazard	Date



WORK IN PROGRESS

P2	Updated following comments from client	SH	19.11.24	BB
P1	WIP Issue	SH	12.11.24	BB
Rev	Revision Details	Drawn	Date	Chkd

Project No: **24025**
 Suitability: **S0 WORK IN PROGRESS**
 Status: **WORK IN PROGRESS**

Client:
Salford UK ELP Limited

Project:
Stadium Way Salford

Sheet Name: Block B - Proposed GA Floor Plan - Level 00			
Drawing No:	24025-HFR-VB-00-DR-A-2000	Rev:	P2
Drawn By:	SH	Scale:	1 : 200 @ A1
Created:	NOVEMBER 2024		

HORIZON
 fletcher | rae

Level 12, Tower 12, 18-22 Bridge Street, Manchester, M3 3BZ
 t +44 (0) 161 242 1140
 w www.fletcher-rae.com
 e info@fletcher-rae.com

General Notes:

This drawing is the property of Fletcher-Rae (UK) Limited and copyright is reserved by them. The drawing is not to be copied, reproduced or re-distributed either in whole or in part without the prior written consent of Fletcher-Rae (UK) Limited.

The originator shall have no responsibility for any liability, loss, cost, damage or expense arising from or relating to any use of this document other than for its intended purpose on this project.

This drawing shall be read in conjunction with all other relevant drawings, specifications and associated documentation. Any discrepancies, errors or omissions are to be reported to the originator before proceeding with work.

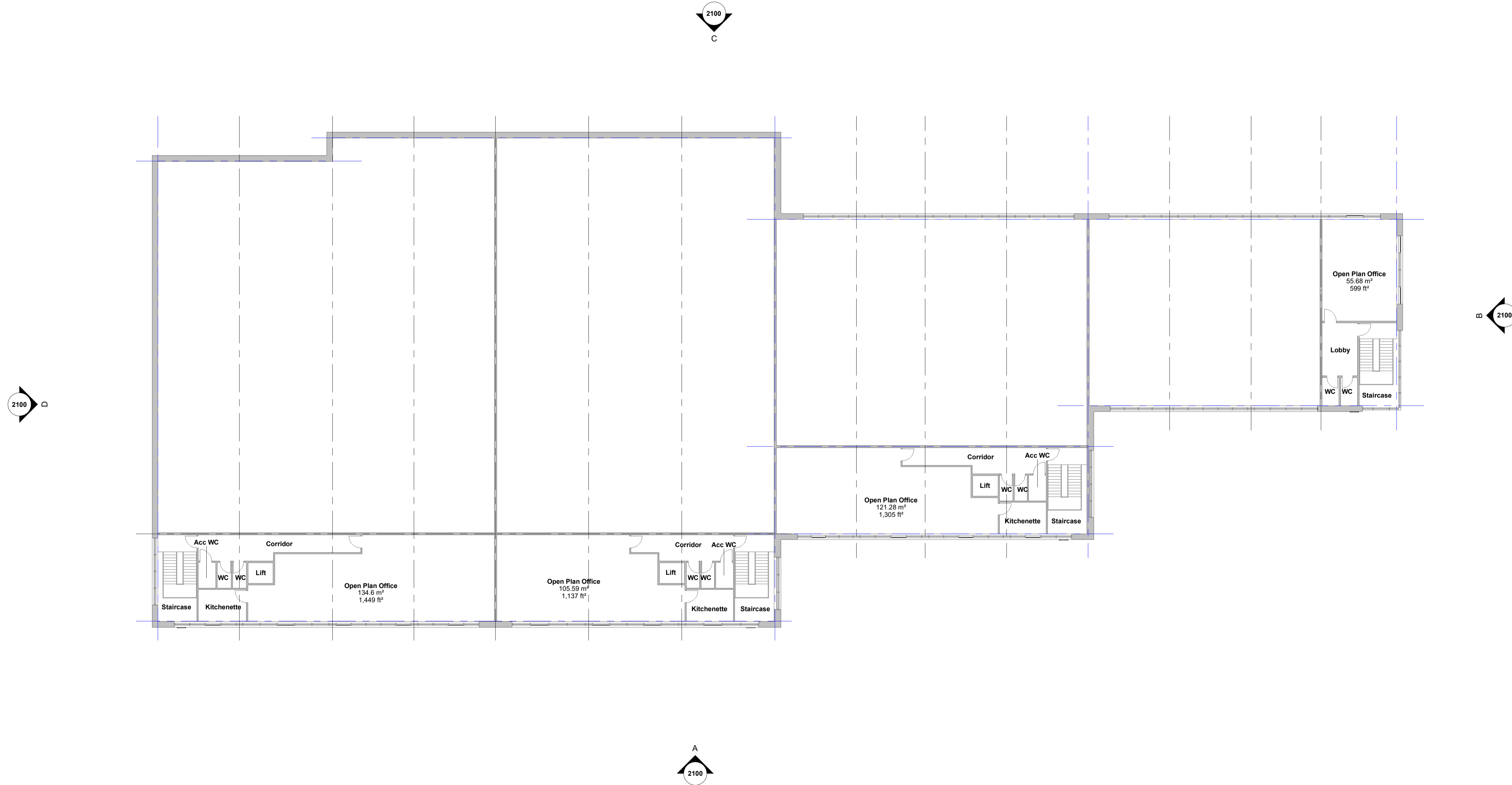
All dimensions are to be checked on site by the contractor prior to proceeding with any work. This drawing shall not be scaled to ascertain any dimensions. Work to figured dimensions only.

DISCLAIMER
When this drawing is issued in CAD, it is an uncontrolled version issued for information only. To enable the recipient to prepare their own documents/drawings for which they are solely responsible.

SOFTWARE INTEROPERABILITY
Fletcher-Rae (UK) Limited prepared this drawing using Autodesk REVIT.

Fletcher-Rae (UK) Limited does not accept liability for any loss or degradation of any information held in the drawing resulting from the transition from the original file format to any other file format or from the recipient's reading of it in any other programme.

Hazard Identification		
Ref	Hazard	Date



WORK IN PROGRESS

P2	Updated following comments from client	SH	19.11.24	BB
P1	WIP Issue	SH	12.11.24	BB
Rev	Revision Details	Drawn	Date	Chkd

Project No: **24025**
 Suitability: **S0 WORK IN PROGRESS**
 Status: **WORK IN PROGRESS**

Client:
Salford UK ELP Limited

Project:
Stadium Way Salford

Sheet Name:
Block B - Proposed GA Floor Plan - Level 01

Drawing No: **24025-HFR-VB-00-DR-A-2001** Rev: **P2**
 Drawn By: **SH** Scale: **1:200 @ A1**
 Created: **NOVEMBER 2024**

HORIZON
 fletcher | rae

Level 12, Tower 12, 18-22 Bridge Street, Manchester, M3 3BZ
 t +44 (0) 161 242 1140
 w www.fletcher-rae.com
 e info@fletcher-rae.com

General Notes:

This drawing is the property of Fletcher-Rae (UK) Limited and copyright is reserved by them. The drawing is not to be copied, reproduced or re-distributed either in whole or in part without the prior written consent of Fletcher-Rae (UK) Limited.

The originator shall have no responsibility for any liability, loss, cost, damage or expense arising from or relating to any use of this document other than for its intended purpose on this project.

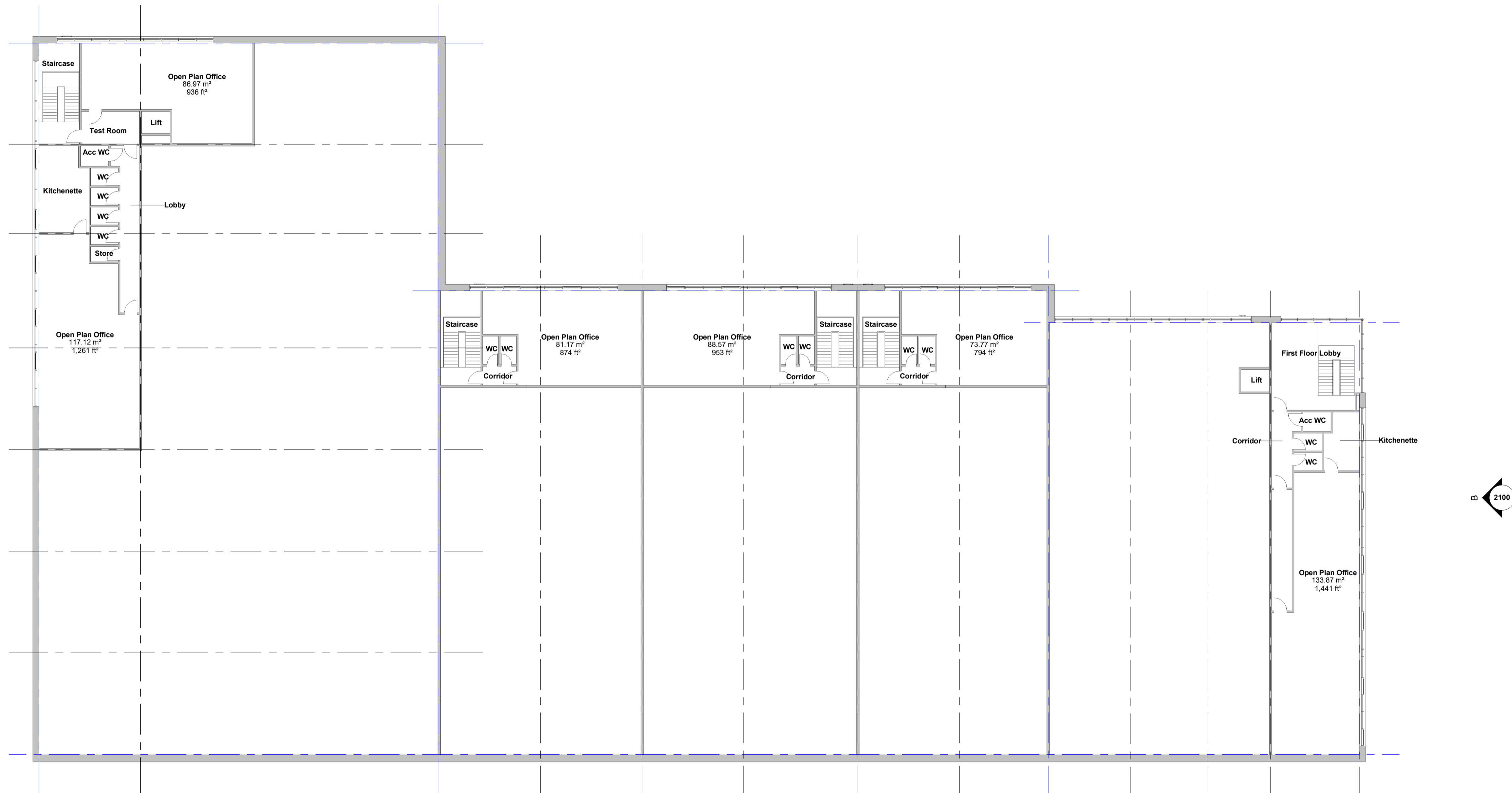
This drawing shall be read in conjunction with all other relevant drawings, specifications and associated documentation. Any discrepancies, errors or omissions are to be reported to the originator before proceeding with work. All dimensions are to be checked on site by the contractor prior to proceeding with any work. This drawing shall not be scaled to ascertain any dimensions. Work to figured dimensions only.

DISCLAIMER
When this drawing is issued in CAD, it is an uncontrolled version issued for information only. To enable the recipient to prepare their own documents/drawings for which they are solely responsible.

SOFTWARE INTEROPERABILITY
Fletcher-Rae (UK) Limited prepared this drawing using Autodesk REVIT.

Fletcher-Rae (UK) Limited does not accept liability for any loss or degradation of any information held in the drawing resulting from the transition from the original file format to any other file format or from the recipient's reading of it in any other programme.

Hazard Identification		
Ref	Hazard	Date



WORK IN PROGRESS

P2	Updated following comments from client	SH	19.11.24	BB
P1	WIP Issue	SH	12.11.24	BB
Rev	Revision Details	Drawn	Date	Chkd

Project No: **24025**
 Suitability: **S0 WORK IN PROGRESS**
 Status: **WORK IN PROGRESS**

Client: **Salford UK ELP Limited**

Project: **Stadium Way Salford**

Sheet Name: **Block A - Proposed GA Floor Plan - Level 01**

Drawing No: **24025-HFR-VA-00-DR-A-2001** Rev: **P2**
 Drawn By: **SH** Scale: **1:200 @ A1**
 Created: **NOVEMBER 2024**

HORIZON
 fletcher | rae

Level 12, Tower 12, 18-22 Bridge Street, Manchester, M3 3BZ
 t +44 (0) 161 242 1140
 w www.fletcher-rae.com
 e info@fletcher-rae.com